

# Installation Guide

**uTYPE™ HLA Sequence  
Analysis Software (Research)**

**Version 7.3**

**Catalog #: 539991**

**For Research Use Only. Not for use in  
diagnostic procedures.**

All of One Lambda software products are designed to assist personnel experienced in HLA analysis by suggesting typing results. However, any clinical or diagnostic results must be carefully reviewed by a person qualified in HLA typing to assure correctness. This software may be used to aid in suggesting results, but should not be used as the sole method for determining reportable results. This software is meant as a laboratory aid, not as a source of definitive results. The software design does not mitigate hazards associated with the software. The laboratory director or technologist trained in histocompatibility testing is required to review all data to detect any problems with the software. Please note that this document was prepared in advance of the uTYPE software release. Therefore, you may notice slight differences in the content of the actual application screens.



A Thermo Fisher Scientific Brand

One Lambda, Inc.  
22801 Roscoe Blvd.,  
West Hills, CA 91304  
Tel: 747.494.1000 • Fax: 747.494.1001  
[www.onelambda.com](http://www.onelambda.com)

© 2020 Thermo Fisher Scientific Inc. All rights reserved. Windows and WinZip are trademarks of Microsoft Corporation. All other trademarks are the property of Thermo Fisher Scientific and its subsidiaries. Specifications, terms and pricing are subject to change. Not all products are available in all countries. Please consult your local sales representative for details.

## Table of Contents

Installing uTYPE HLA Sequence Analysis Software (RUO) 7.3.....	4
Installation Notes.....	4
Installation Steps.....	4
Verify the correct installation of uTYPE (RUO) 7.3.....	7
Uninstalling uTYPE (RUO) 7.3 .....	8
Version History.....	8

## Installing uTYPE HLA Sequence Analysis Software (Research) 7.3

uTYPE HLA Sequence Analysis Software (RUO) 7.3 is available for users who have already installed uTYPE (RUO) 7.0 or higher. You will need Administrator level access on your computer to install the software. If you do not have Administrator access, contact your system administrator for help with this installation.


### Installation Notes

Please read the following:

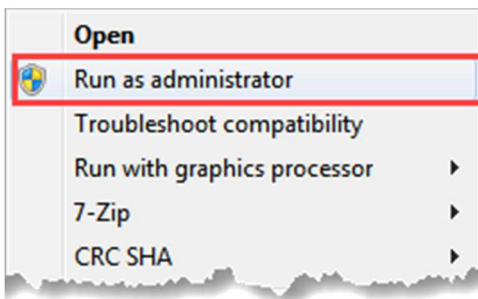
1. uTYPE (RUO) 7.3 is only compatible with computers running Microsoft Windows 10, and can only be installed on computers running uTYPE (RUO) versions 7.0 or higher.
2. Make sure that all users log off and close current uTYPE application before installation.
3. You must install the software on each workstation running uTYPE, and you must have Administrator privileges on the computer in order to install it.
4. Installation of uType (RUO) 7.0 software will require a workstation with CD-ROM drive.

### Installation Steps

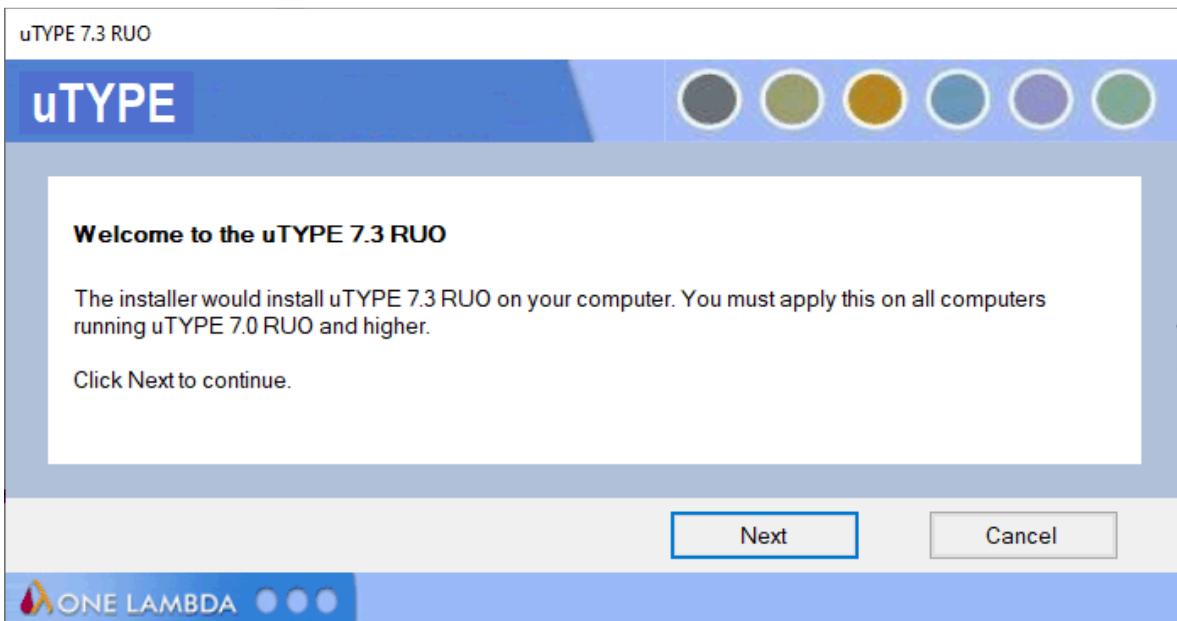
1. Download the uType (RUO) 7.3 package file in .zip format (HLA SBT uTYPE RUO 7.3.zip) from the uTYPE Software product web page at <http://www.onelambda.com/en/product/utype.html>
2. Unzip the files locally. The date and time stamp for the setup file should be 4/29/2020 at 7:40 AM.

Name	Date modified	Type	Size
 HLA SBT uTYPE RUO 7.3	4/29/2020 7:40 AM	Application	1,871 KB

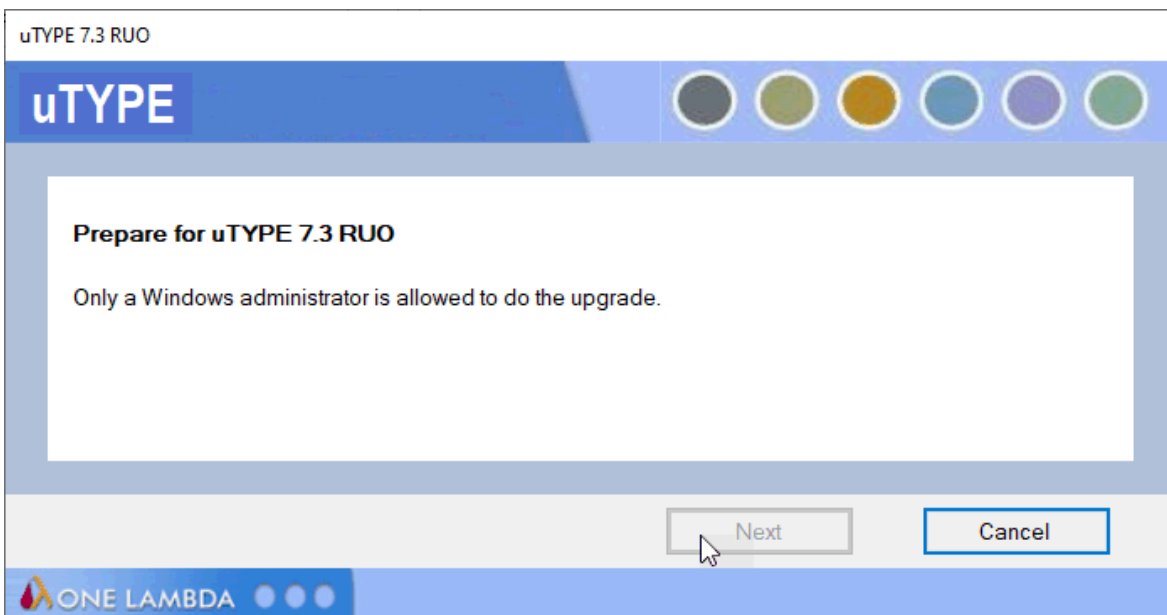
3. Right-click on the .EXE file and select **'Run as administrator.'** NOTE: Any running instance of uTYPE must be exited prior to installation.



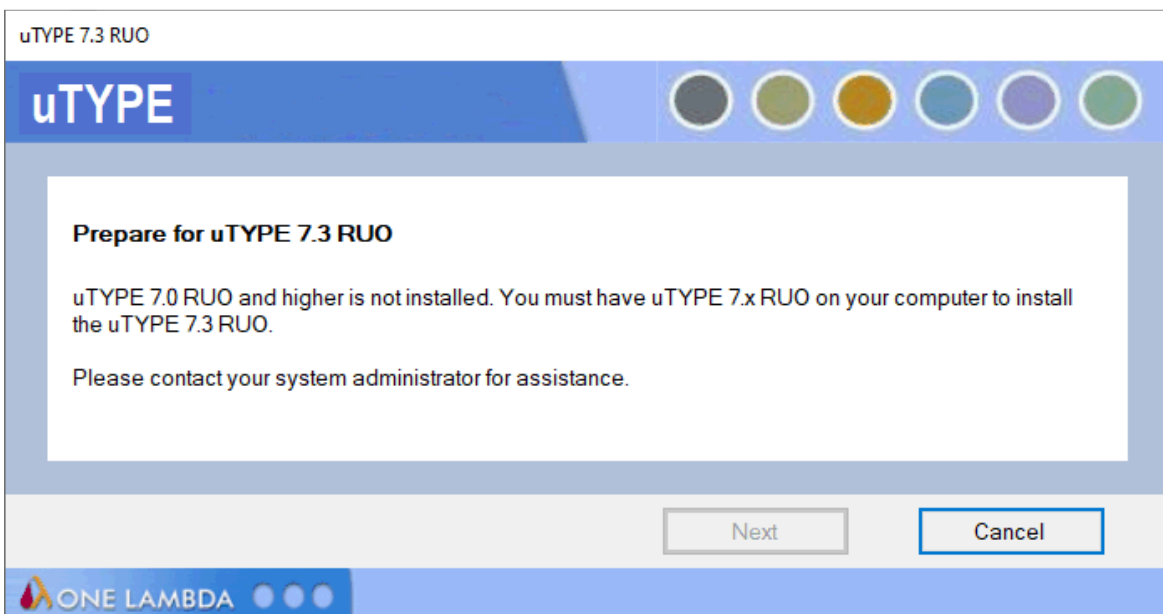
4. The system will verify that you have permission to install the software. Click **'Yes.'**
5. Click **'Next'** on the uTYPE (RUO) 7.3 installation window (shown below):



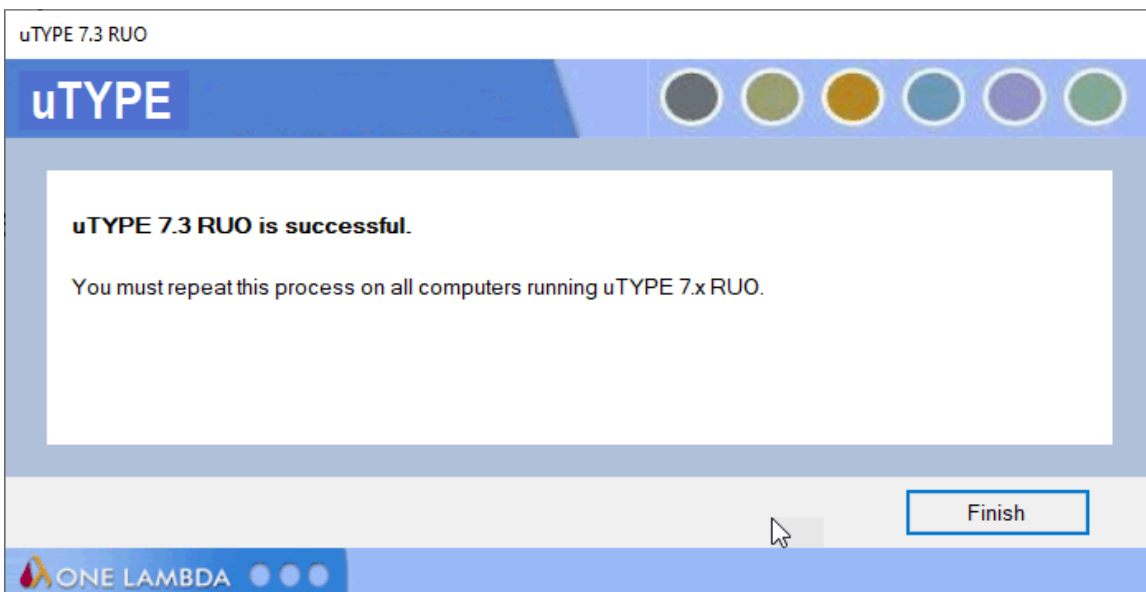
- 6. NOTE: If you did not **Run as administrator** in Step 3 and double-clicked the icon instead, you may see the following message (below). Click the **Cancel** button and repeat the installation from Step 3.



- 7. If you do not have uTYPE (RUO) 7.x installed, you will see the following message (below). In this case, click 'Cancel.' Install the appropriate software, then continue the installation from Step 3.

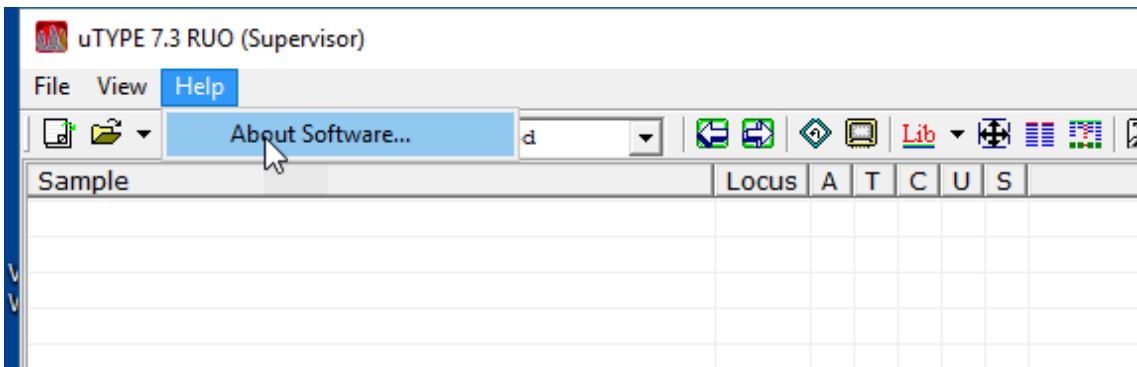


- 8. The software installer proceeds and displays the following message (shown below) when the installation is complete. Click on **Finish** to complete the installation.

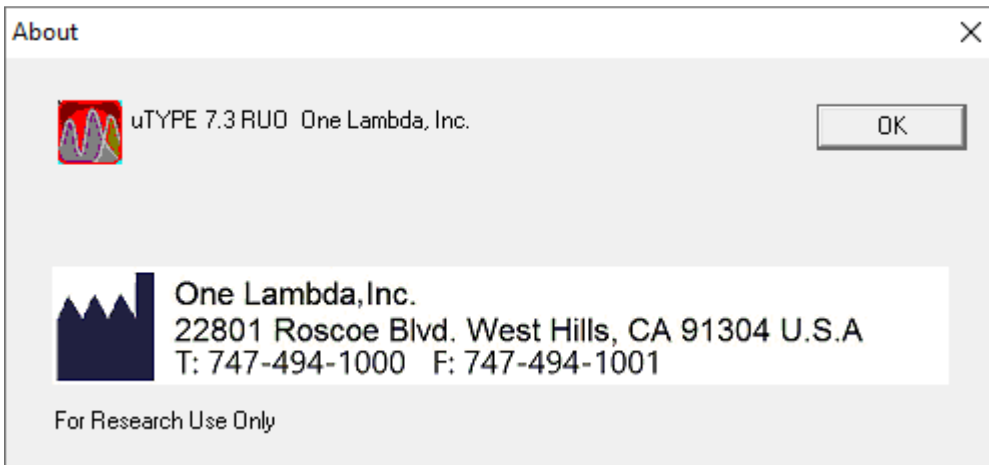


## Verify the correct installation of uTYPE (RUO) 7.3

1. Open the uTYPE application and navigate to **Help → About Software**.



2. A small window will appear and display “uTYPE 7.3 RUO” and a copyright notice:

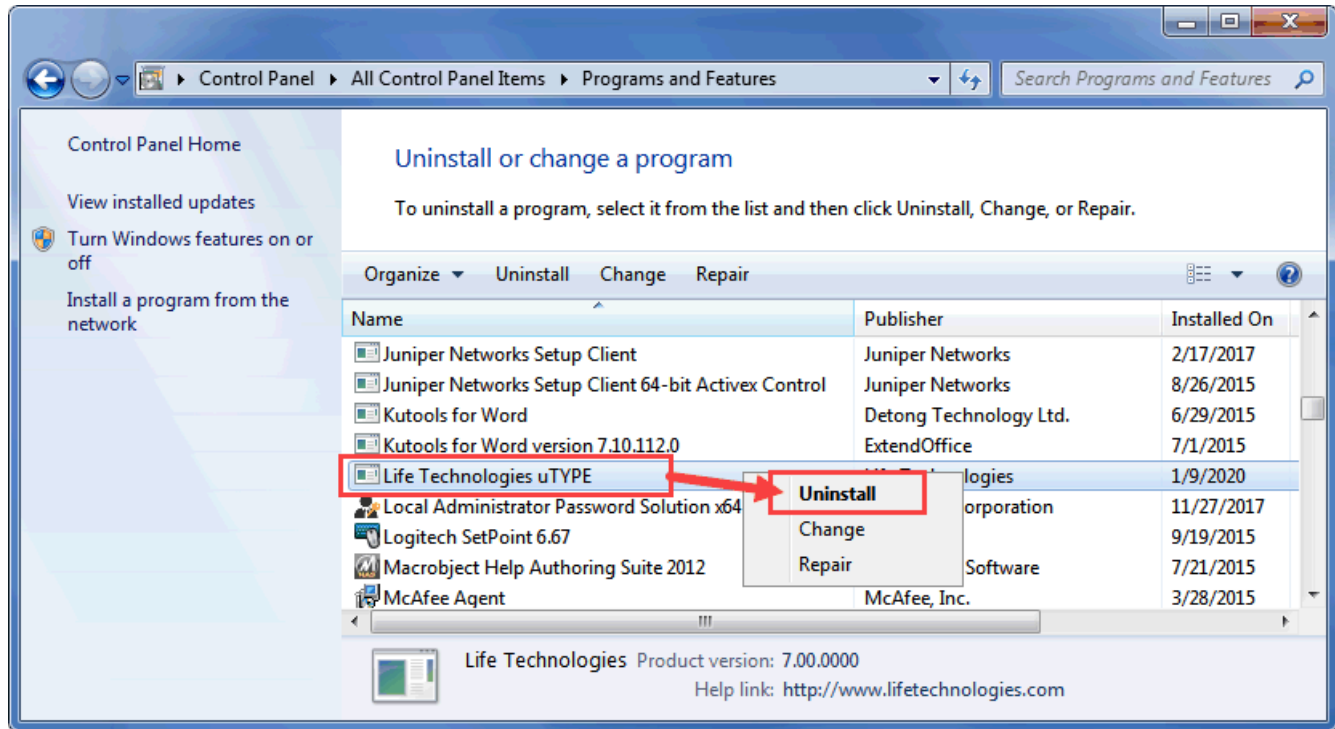


3. If the version information is not as described, please contact One Lambda Technical Support for assistance.
  - From the United States, call: **800-822-8824**.
  - From the Greater Los Angeles Area, call: **747-494-1000**.
  - E-mail: [1lambda-techsupport@thermofisher.com](mailto:1lambda-techsupport@thermofisher.com).

**Note:** When switching between computers for standalone installations utilizing a storage folder on the local hard drive, remember to copy the storage folder to the new computer and update the path in the Settings option.

## Uninstalling uTYPE (RUO) 7.3

From the **Control Panel, Programs and Features** section, select **Life Technologies uTYPE**. Right click and select **Uninstall**.



**Note:** If the **Uninstall** Button is not displayed, contact your system administrator - you may not have the necessary privilege level to uninstall software programs.

After uninstalling the program, verify that the .exe. has been removed from **C:\Program Files (x86)\Invitrogen\SBT**.

## Version History

Revision	Date	Revision Description
01	23 Jun 2020	Initial release
02	Current	Updated Install Notes section for uType (RUO) 7.0.