

Installation Guide

**TypeStream™ Visual Analysis Software
Version 2.0**

Catalog #: TSVPGR



In Vitro Diagnostic use in the European Union Only

This software is for In Vitro Diagnostic Use in the European Union Only.

This software is meant as a laboratory aid, not as a source of definitive results. The laboratory director or technologist trained in histocompatibility testing is required to review all data to detect any problems with the software



One Lambda, Inc.
22801 Roscoe Blvd. West Hills, CA 91304 U.S.A
T: 747.494.1000 F: 747-494-1001



MDSS GmbH
Schiffgraben 41,
30175
Hannover, Germany

© 2020 Thermo Fisher Scientific Inc. All rights reserved. Windows and Microsoft are trademarks of Microsoft Corporation. All other trademarks are the property of Thermo Fisher Scientific and its subsidiaries. Specifications, terms and pricing are subject to change. Not all products are available in all countries. Please consult your local sales representative for details.

Table of Contents

System Requirements	2
Minimum Software Required	2
Minimum Hardware Required.....	2
Installing TypeStream Visual Software 2.0	3
Step 1: Download the TypeStream Visual Software.....	3
Step 2: Install Microsoft components	3
Step 3: Install TypeStream Visual 2.0.....	11
Step 4: Connect to a Database	15
Connect to a Database	16
Verify installation of TypeStream Visual 2.0	19
Updating Prior Versions of TypeStream Visual Software to 2.0	21
Licensing TypeStream Visual 2.0.....	22
License Key Activation.....	22
Uninstalling TypeStream Visual Software 2.0.....	25
(Optional) Backup your TypeStream Visual Database	25
Uninstalling the TypeStream Visual Program	26
Appendix A.....	27
Checklist for Installation Configuration.....	27
Appendix B.....	28
Folder Permission	28

System Requirements

Before you begin:

You will need Administrator level access on your computer to install TypeStream Visual software. If you do not have Administrator access, contact your system administrator for help with this installation.

Minimum Software Required

- Microsoft® Windows® 10, 64-bit operating system
- Microsoft .NET 4.6.1 Framework – included in installation
- Microsoft Visual C++ 2005 SP1 Redistributable package – included in installation
- SAP Crystal Reports 13.0.17 Runtime for .Net 4.6.1 – included in installation
- The system requires Microsoft SQL Express 2014 Server – included in the installation
- WinZip – not included in installation

Minimum Hardware Required

Minimum required hardware for TypeStream Visual.

- The system shall support an 8-bit graphic adapter and display (for 256 simultaneous colors)
- The system requires a mouse or other Windows compatible pointing device.
- The system shall operate on a VGA display with 1920 x 1080 screen resolution.
- The system shall run on 4-core processor with 8 threads.
- Minimum of 16GB RAM.

Microsoft SQL Server Considerations

Use the standalone installation process described in [Appendix A, Checklists for Installation Configurations](#). If you want to use a SQL Server from another location, one of two things must be done:

Note: The SQL Server Express version supplied on the TypeStream Visual program does not have all the functionality of the full version of SQL Server. For example, it allows a maximum of 10 GB of storage space. There are a variety of SQL Server versions you can use with TypeStream Visual, so be sure to check the limitations of the version you plan to use. See your system administrator for further guidance and information on installing SQL Server.

Installing TypeStream Visual Software 2.0

Step 1: Download the TypeStream Visual Software

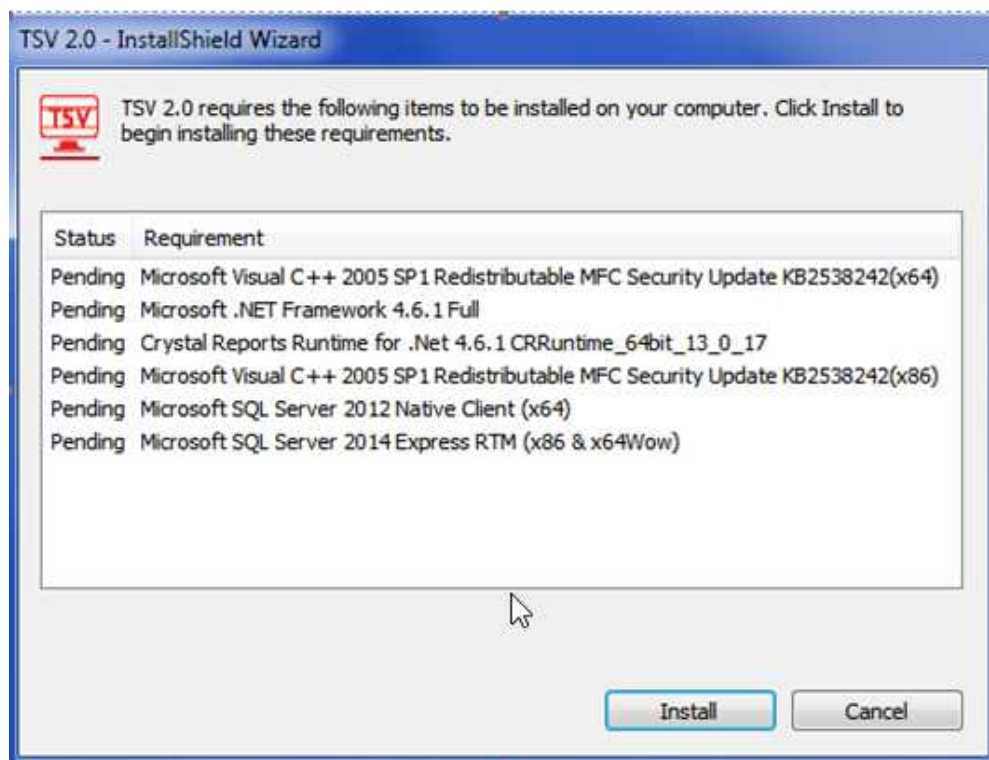
Unzip the downloaded file **TSV_2.0_Setup.zip** and click the **TSV_2.0_Setup.exe** file. The datetime for **TSV_2.0_Setup.exe** should be **03/06/2020 11:00AM**.

You must have administrator equivalent privileges to install the TypeStream Visual software. The installer will ask you for the destination location for the software.

Step 2: Install Microsoft components

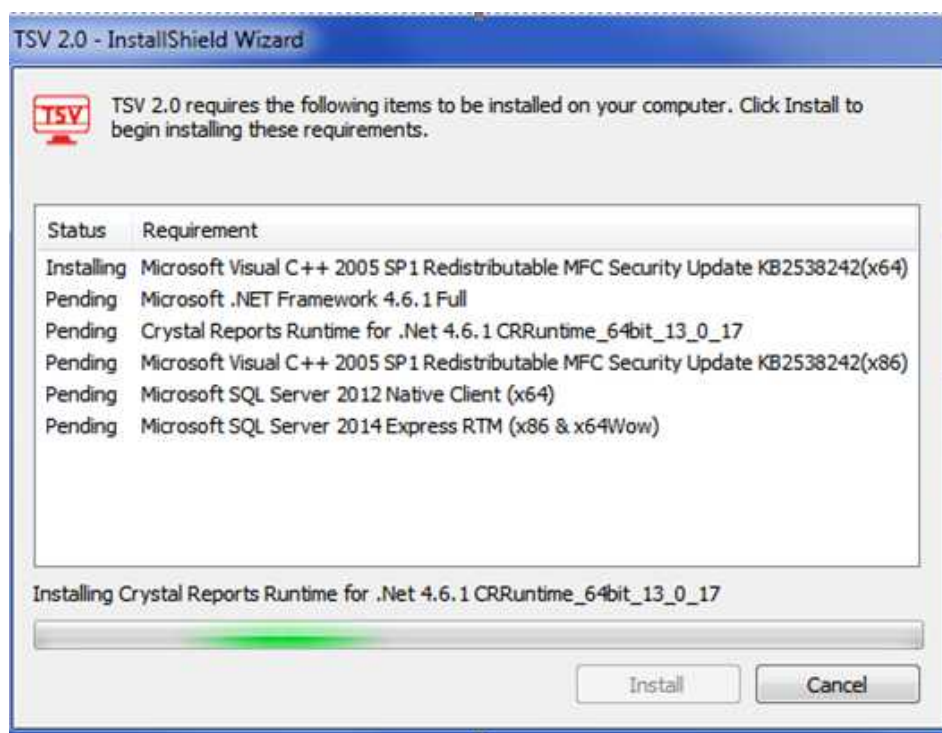
Once installation begins, the installer looks for the required components on your computer (Microsoft SQL Server and Microsoft .NET Framework) and automatically prompts you to install any missing component(s).

If you see the following requirements dialog box, click Install to start the installation process for the required component(s). If you do not see the dialog box as in the below screenshot, the required programs are already installed, and you may proceed to Step 3 to start TypeStream Visual installation.



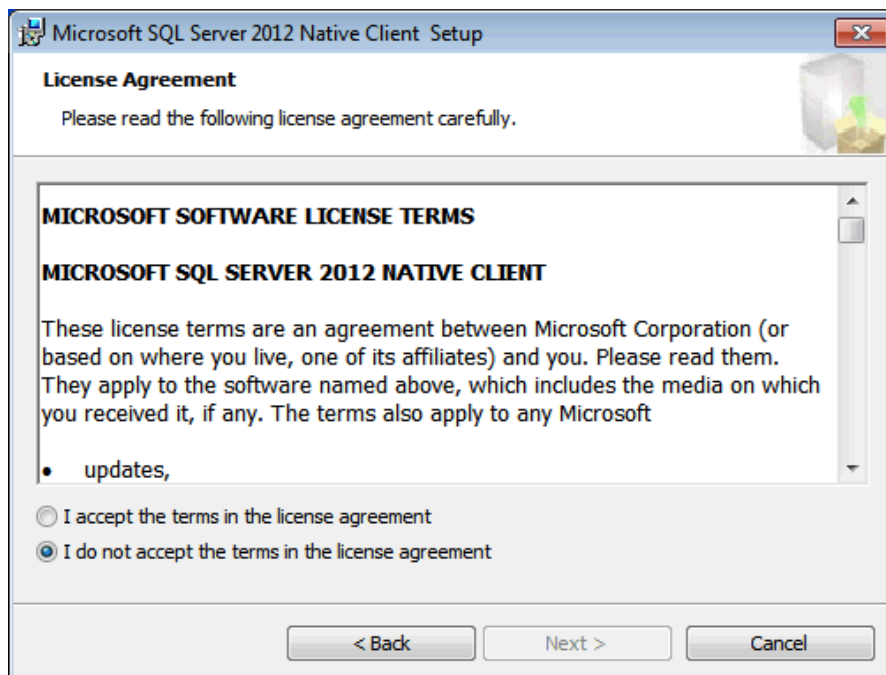
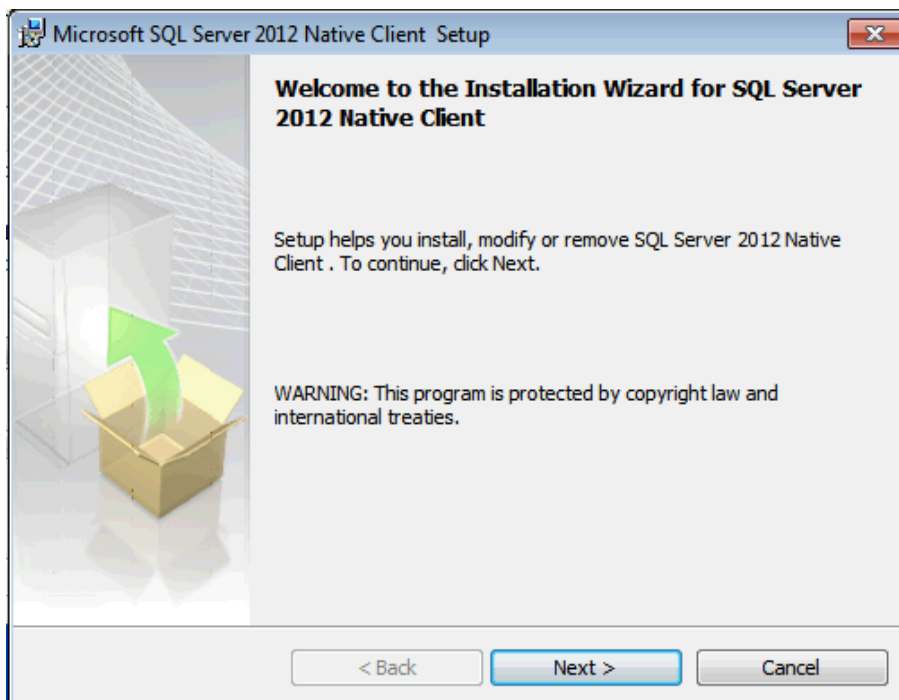
Note: In some cases, you may see a message asking you whether you want to reboot following the .NET installation. You do not need to reboot now but should do so following the installation of TypeStream Visual.

A progress bar will display throughout as you are walked through the installation process.

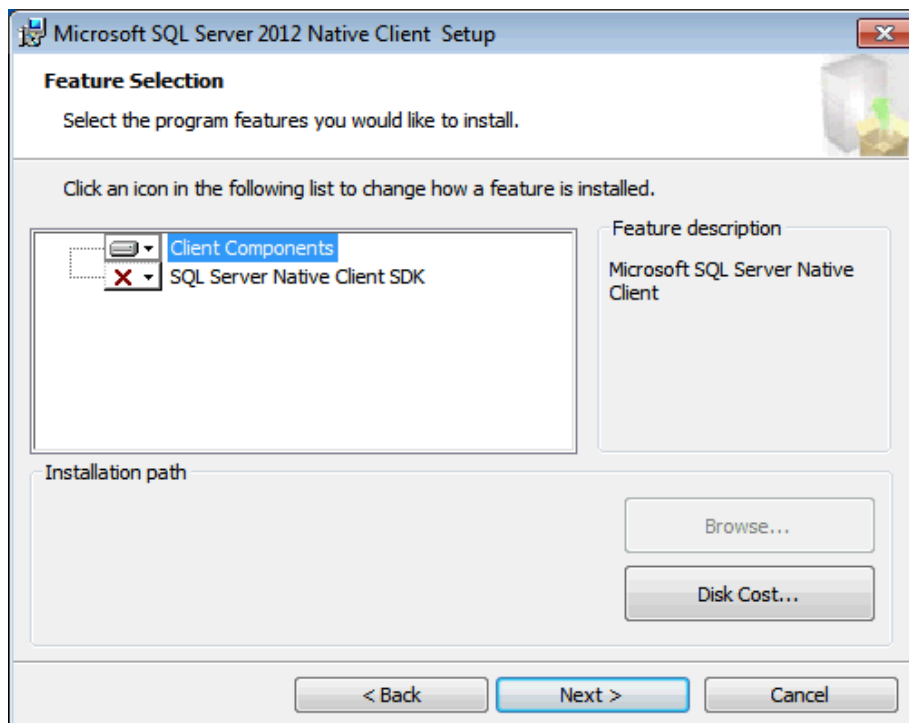


If a version of Microsoft SQL Server with a TypeStream Visual instance is not detected on your computer, you will be prompted to install one, as in the below screenshot. Click the Yes button when prompted.

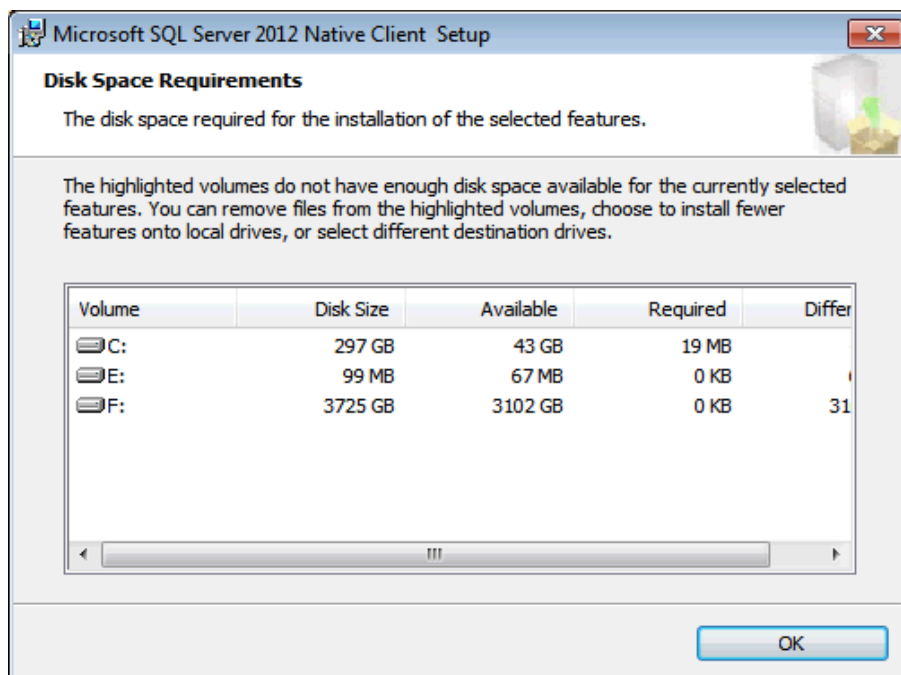
Status changes from “Installing” to “Succeeded” for each Requirement



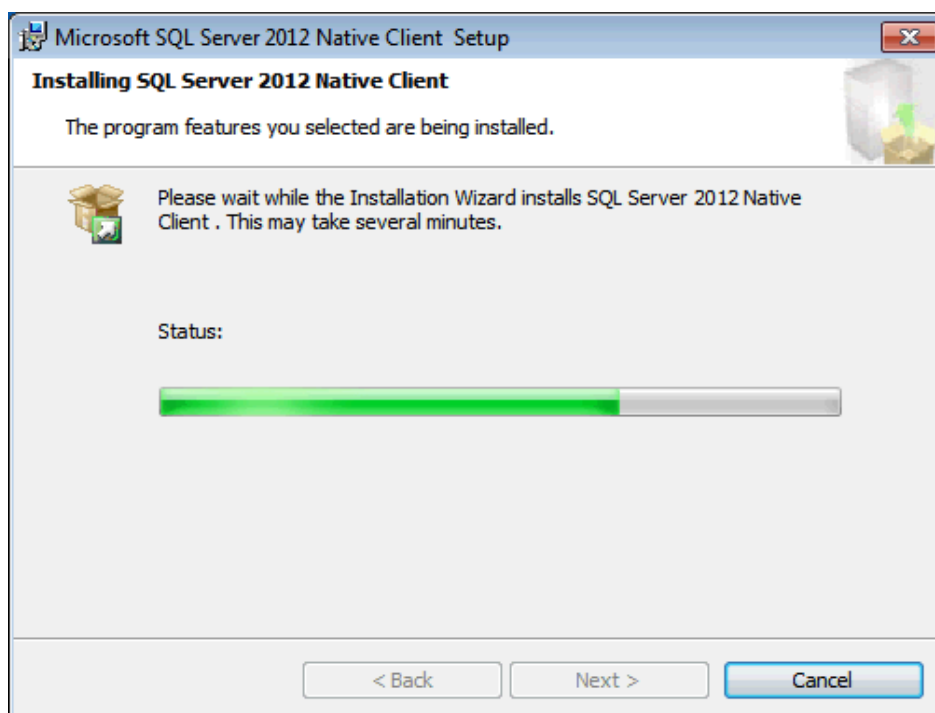
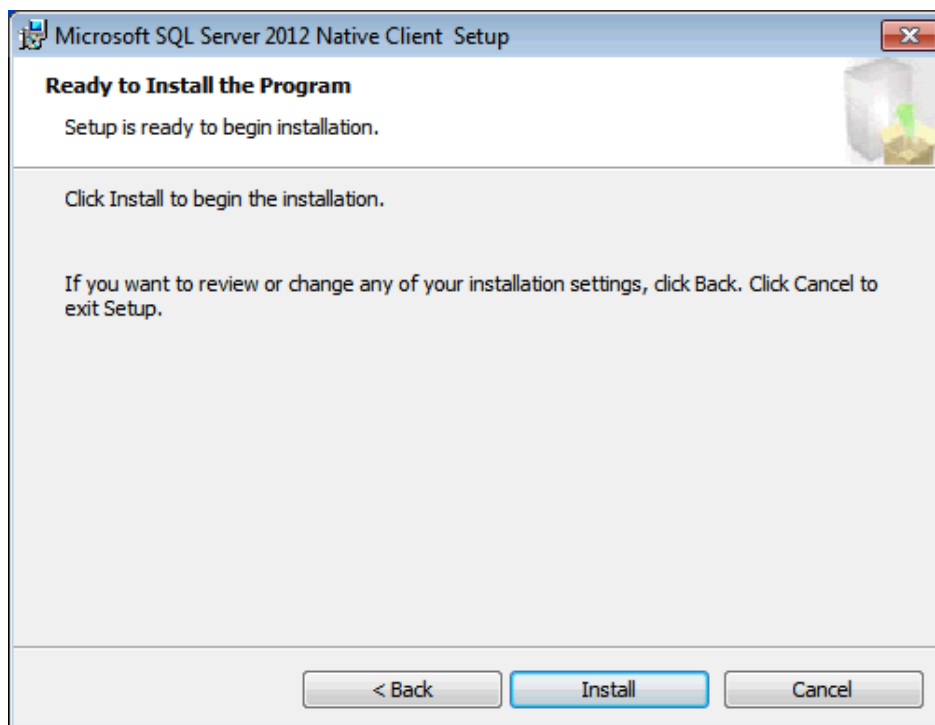
Clicking the “I accept...” radio button to accept all terms in the license agreement will enable the “Next” progress button. Clicking Next on the License Agreement screen will allow the user to select program features to install.



“Disk Cost...” button will allow the installer to evaluate the machine’s partitions in order to determine whether there is adequate hard drive space to continue the installation.

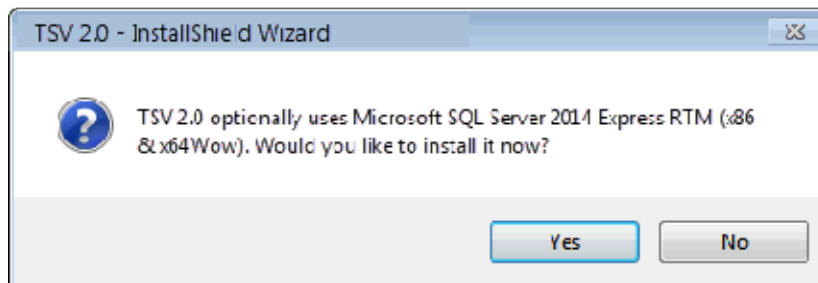


Provided there is adequate disk space, the installation of SQL Server can begin. Click “Install” to proceed.

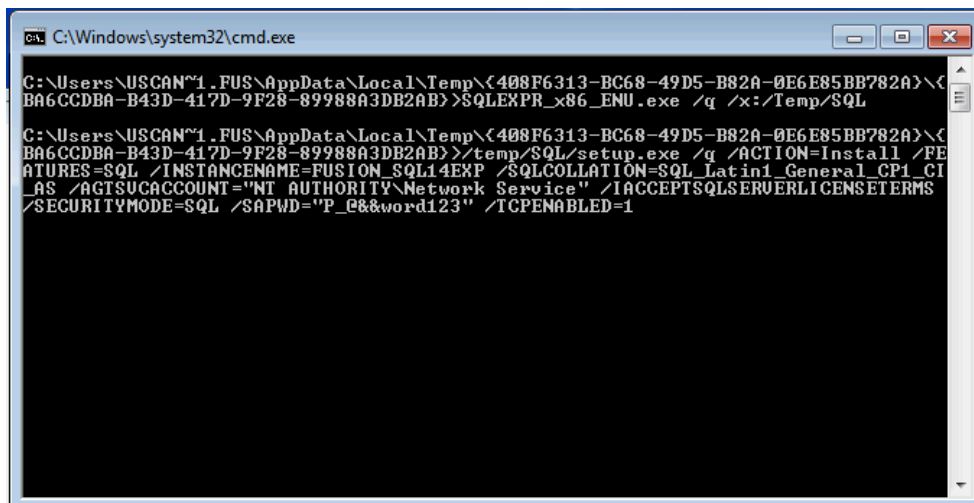




Installer provides the option to install Microsoft SQL Server 2014 Express RTM (Release to Manufacturing). Click "Yes" to include.



Installer opens a command line window for the installation of SQL Server 2014 Express. When complete, this screen displays "Success" and installation will continue.



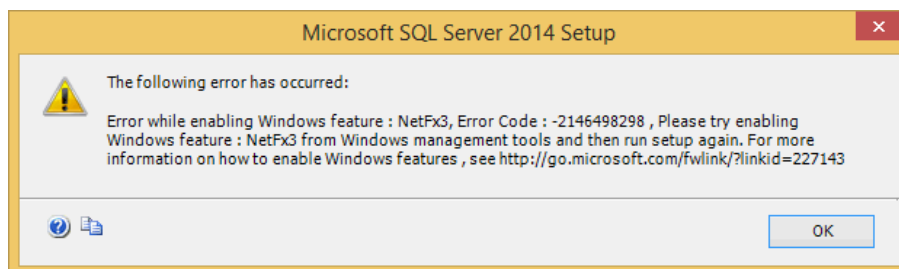
```
C:\Windows\system32\cmd.exe


C:\Users\USCAN~1\FUS\AppData\Local\Temp\{408F6313-BC68-49D5-B82A-0E6E85BB782A}>\<
BA6CCDBA-B43D-417D-9F28-89988A3DB2AB>>SQLSEXP_x86_ENU.exe /q /x:/Temp/SQL

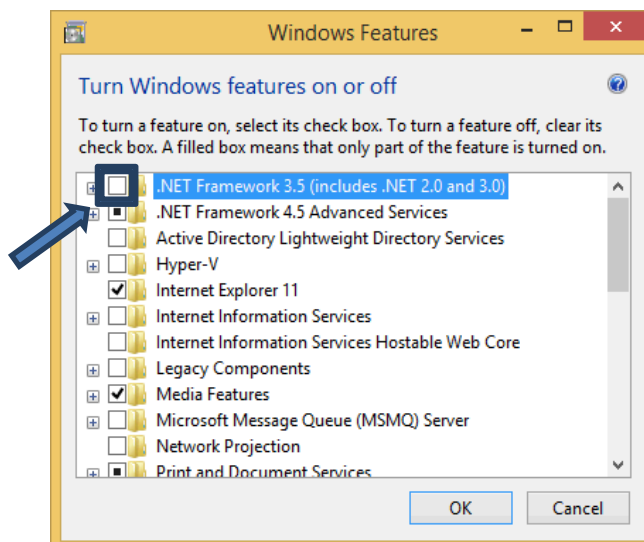
C:\Users\USCAN~1\FUS\AppData\Local\Temp\{408F6313-BC68-49D5-B82A-0E6E85BB782A}>\<
BA6CCDBA-B43D-417D-9F28-89988A3DB2AB>>temp/SQL/setup.exe /q /ACTION=Install /FE
ATURES=SQL /INSTANCENAME=FUSION_SQL14EXP /SQLCOLLATION=SQL_Latin1_General_CP1_CI
_AS /AGTSUGACCOUNT="NT AUTHORITY\Network Service" /IACCEPTSQLSERVERLICENSETERMS
/SECURITYMODE=SQL /SAPWD="P_0&word123" /TCPENABLED=1
```

If you get a Microsoft SQL Server 2014 Setup error, you do not have the Microsoft .NET 3.5 Framework installed and/or enabled on your computer.

In this case, follow the steps on the next screen to activate the .NET 3.5 Framework or consult your Systems Administrator for assistance.

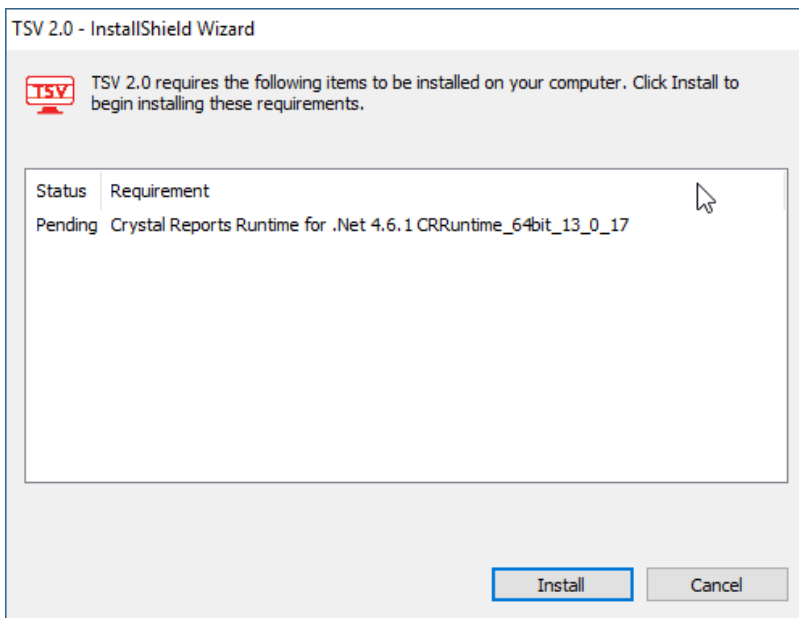


To fix this problem, click the Start button , click Control Panel, click Programs and Features, and then click Turn Windows features on or off. Then place a check mark in the checkbox that activates the .NET Framework 3.5 and click OK



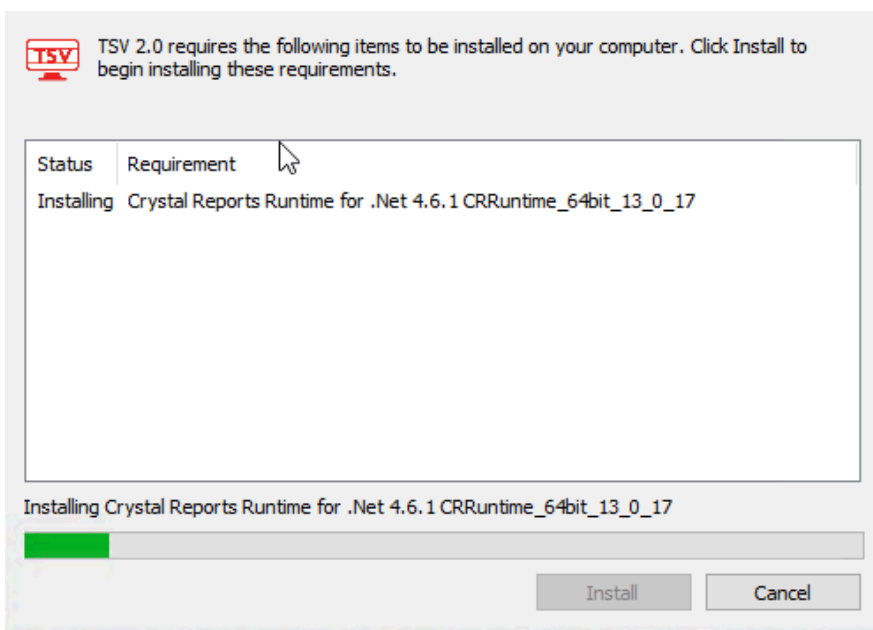
Note: In some cases, you may see a message asking you whether you want to reboot following the **.NET** installation. You do not need to reboot now but should do so following the installation of TypeStream Visual.

It is necessary to install Crystal Report for the reporting modules. Click 'Install.'



Crystal Reports extracts and install files.

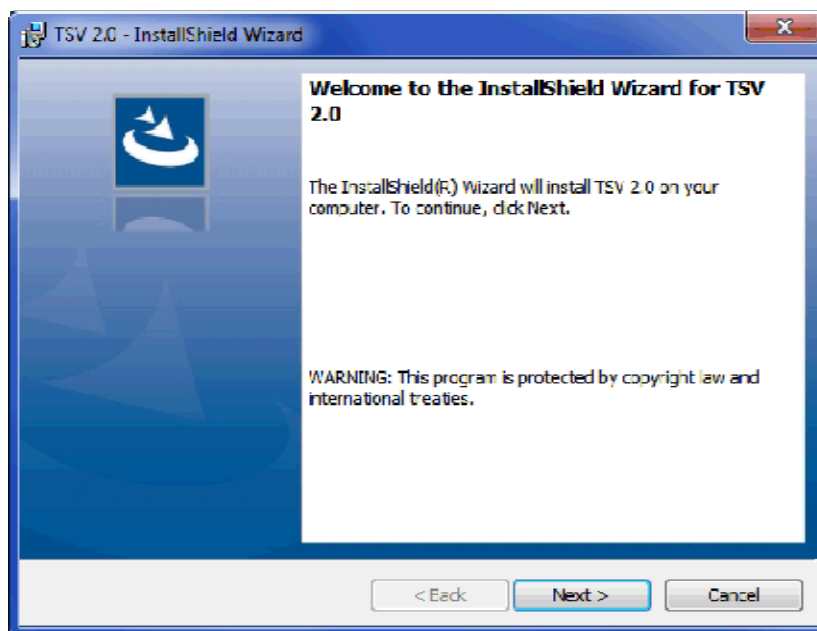
TSV 2.0 - InstallShield Wizard



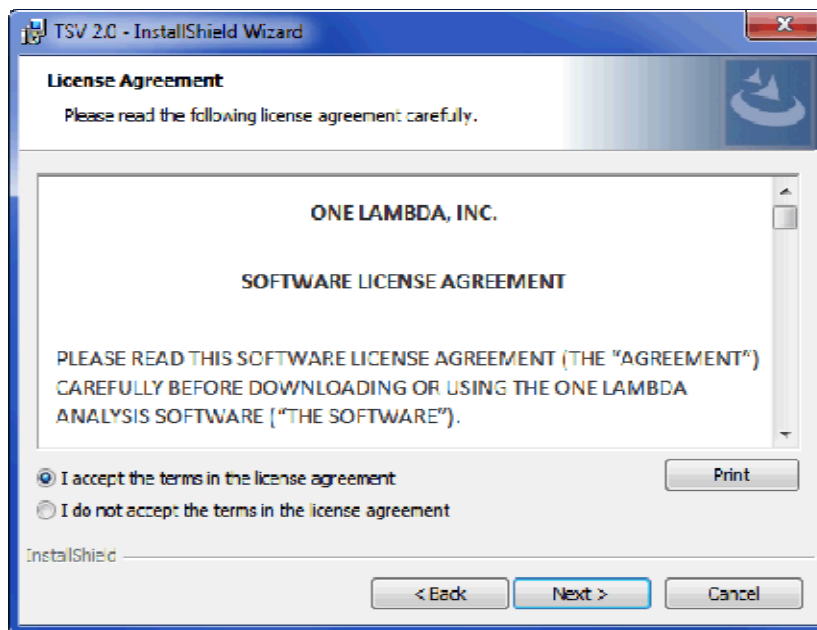
Click 'Finish' on the final screen. TypeStream Visual installation will continue.

Step 3: Install TypeStream Visual 2.0

At the welcome screen, please wait while your system space requirements are calculated.



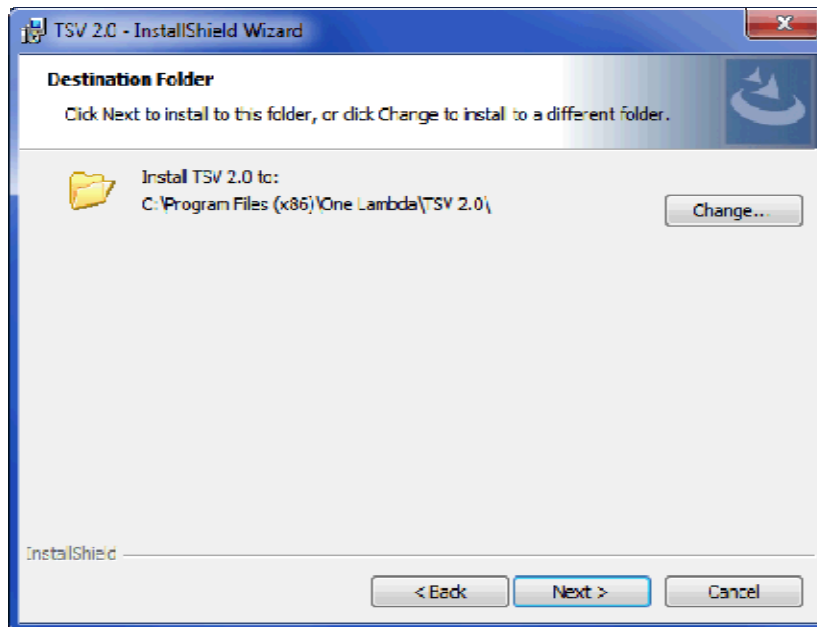
When the Next button is activated, click it to proceed:



The License Agreement displays. Please read and accept the terms of the License Agreement. Print button is available if you would like a printed copy of the Software License Agreement.

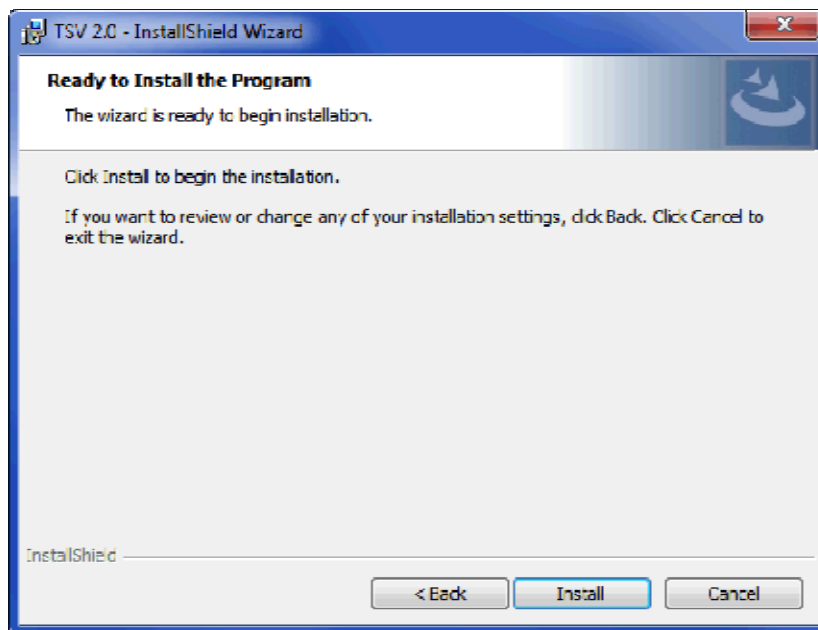
Select the option, *I accept the terms in the license agreement* and click the Next button to continue.

The Destination Folder dialog box now displays:

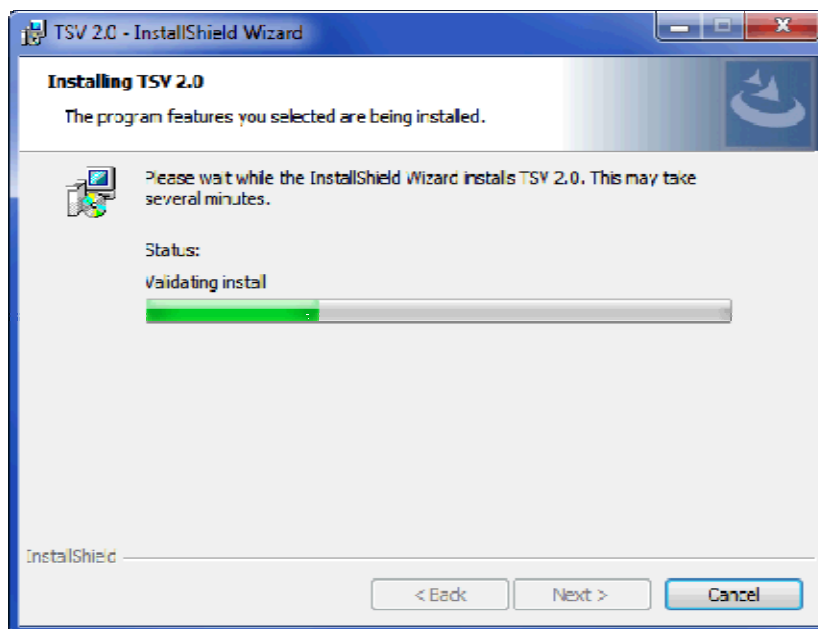


Verify, or change the destination folder for the TypeStream Visual program files and click the Next button to continue.

The installer is now ready to install the TypeStream Visual program files:



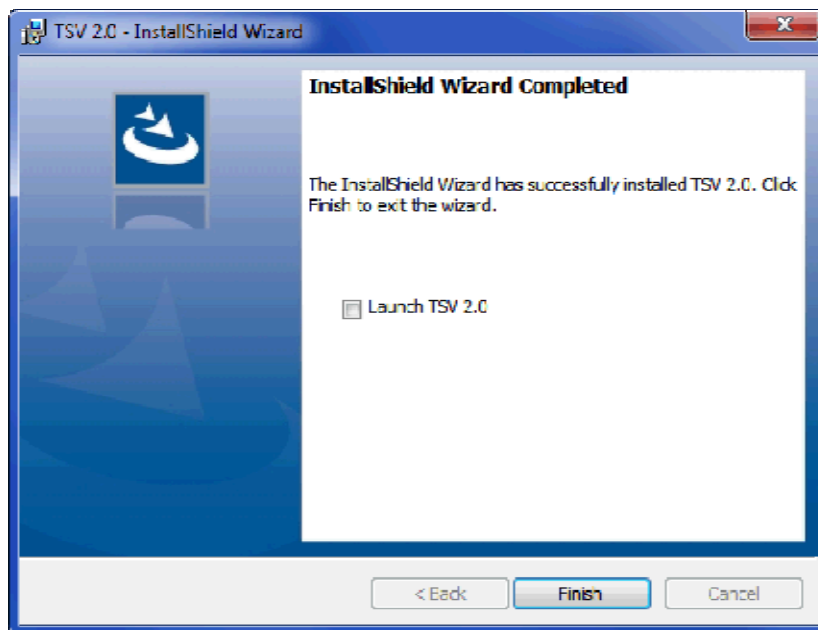
Click the Install button to begin installing TypeStream Visual. Please wait as installation progresses:



The Installer wizard displays an Installation Completed message when the TypeStream Visual installation is finished.

The following two icons are created on successful installation of TSV software.





When installation is complete, select the check box for Launch TSV 2.0, and then click the Finish button.

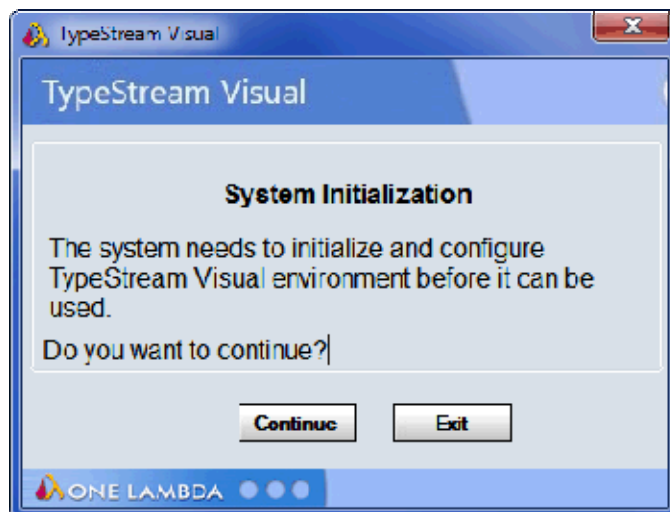
Note: Please note that the installation of TypeStream Visual creates a directory called C:\OLI TSV, as well as some sub directories such as data, rpt, and temp. The location of these directories is set during installation. Please do not copy, modify, or remove any files from the C:\OLI TSV\data\catalog or C:\OLI TSV\rpt directories.

The installer automatically launches the TypeStream Visual application (This may take a few moments.) If TypeStream Visual does not start, double-click the TSV 2.0 icon on your computer desktop:

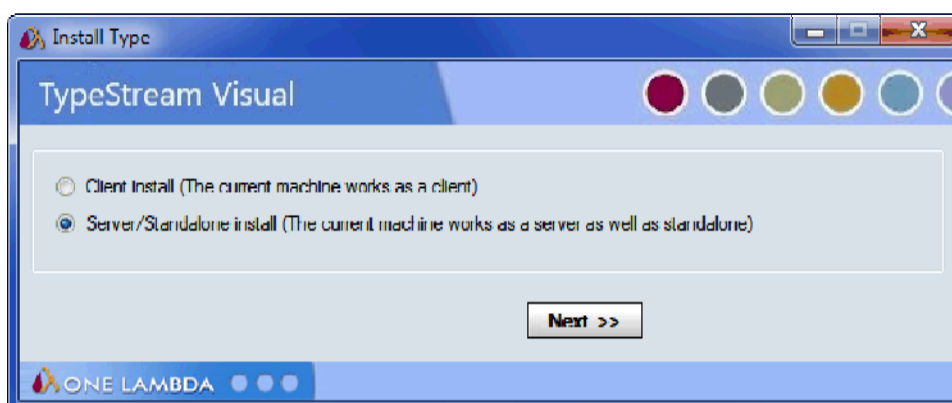


Proceed to Step 4 to create and/or connect a database to the TypeStream Visual application.

If the TypeStream Visual database connection is not yet set up when the program is launched, (as is the case the very first time it is launched) a System Initialization message is displayed to indicate this. Click the Continue button and proceed to step 4 to create and/or connect a database to the application.



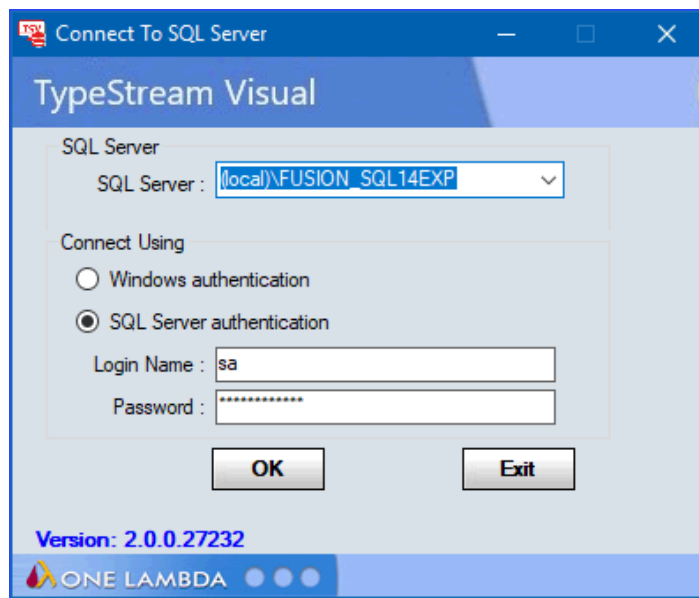
Step 4: Connect to a Database



Select the appropriate installation type from the TSV Database Utility window that displays after TypeStream Visual has been installed.

Connect to a SQL Server

Note: Be sure you know which SQL server you should connect to. See Appendix, *Checklists for Installation Configurations*, for guidelines.



Select a SQL Server by doing one of the following:

- Type in the full path, directory, and server name.
- Click the drop-down arrow in the SQL Server field to display a list of local SQL Servers.
- Click the dropdown selection arrow to display a list of SQL Servers available from your network. For a first-time installation, there will be no options

Note: The specified SQL Server must be allowed to receive remote connections and you must have the appropriate user ID and password to connect to it. If necessary, contact your system administrator to determine whether the specified SQL Server is configured for Windows, or for SQL Server authentication, or both.

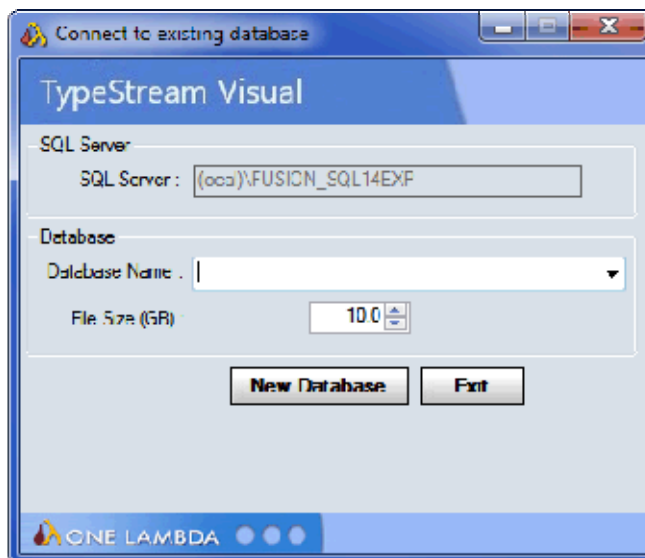
Select a security connection type. SQL Server authentication is recommended. For SQL Server authentication, enter your Login Name and Password, (Windows authentication usually requires configuration by administrator). Now Click the OK button.

Connect to a Database

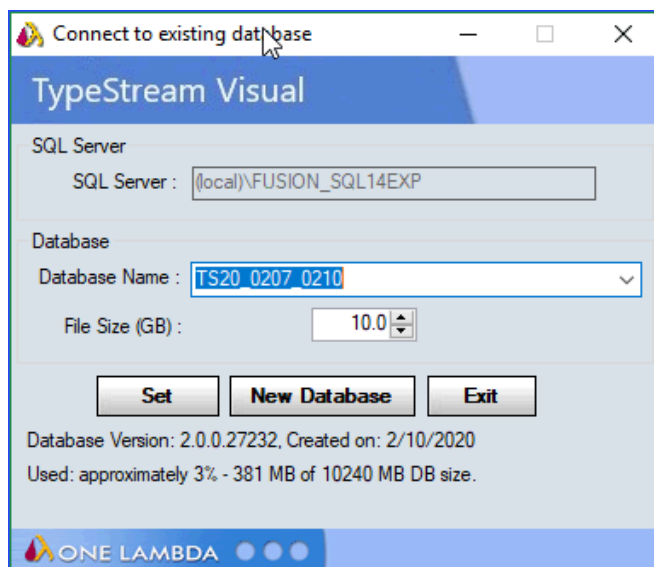
1. Create a new database and/or connect to an existing one. Initial installation will require creating a new database.

Do one of the following to connect to a database:

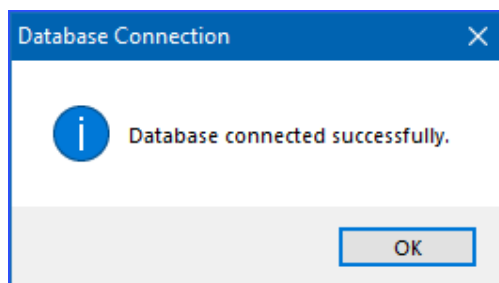
- To create a new database, enter a unique name for the new database, and click the New Database button. After the database has been created, click the Set button (not shown):



- To connect to the new database or an upgraded 2.0 database, select the database name from the Database Name drop-down list, and click the Set button as shown below:
 - To migrate a 1.x database standalone configuration refer to the user manual



A confirmation message is displayed when you have successfully connected to a database:



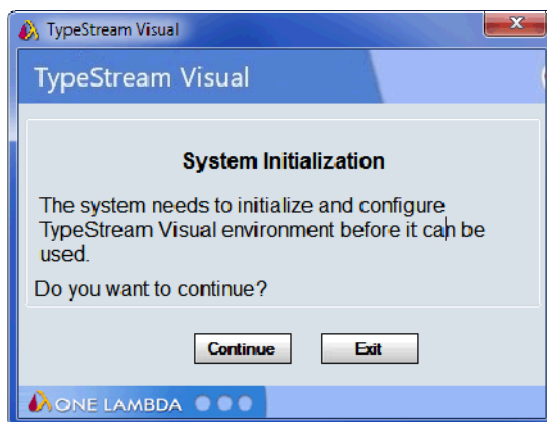
Click the OK button. The TypeStream Visual application should automatically launch. If it does not, double-click the TSV 2.0 icon located on your computer desktop.

2. Set Up the first user profile and lab information

Note: If this is the first time you have connected to this database, you will need to set up User and Lab profiles.

When the software launches with a connection to a new database, the User Info Screen appears.

Fill in all required fields, (denoted with an asterisk*) to set up a User Profile and click the Next button.

A screenshot of the 'TypeStream Visual' User Info screen. The title bar says 'User Info' and the window title is 'TypeStream Visual'. The form contains the following fields: 'Last Name*' (text box), 'First Name*' (text box), 'M. I.' (text box), 'Role*' (dropdown menu with 'Lab Supervisor' selected), a checked 'Active' checkbox, 'User Name*' (text box), 'Password*' (text box), 'Confirm Password*' (text box), 'What is the name of your best childhood friend?' (text box), and 'What is the name of the city in which you were born?' (text box). At the bottom right are 'Next >>' and 'Cancel' buttons. The One Lambda logo is in the bottom left corner.

Enter all necessary information on the **Lab Profile Screen** (an asterisk * denotes required fields)

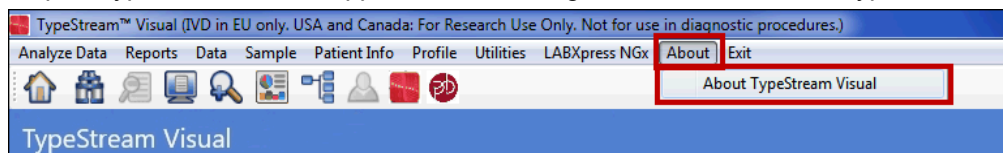
Note: The first user is always set to the **Lab Supervisor Role**. Lab name and contact information will be displayed in the footer section of the TypeStream Visual reports.

Click the **Next** button:

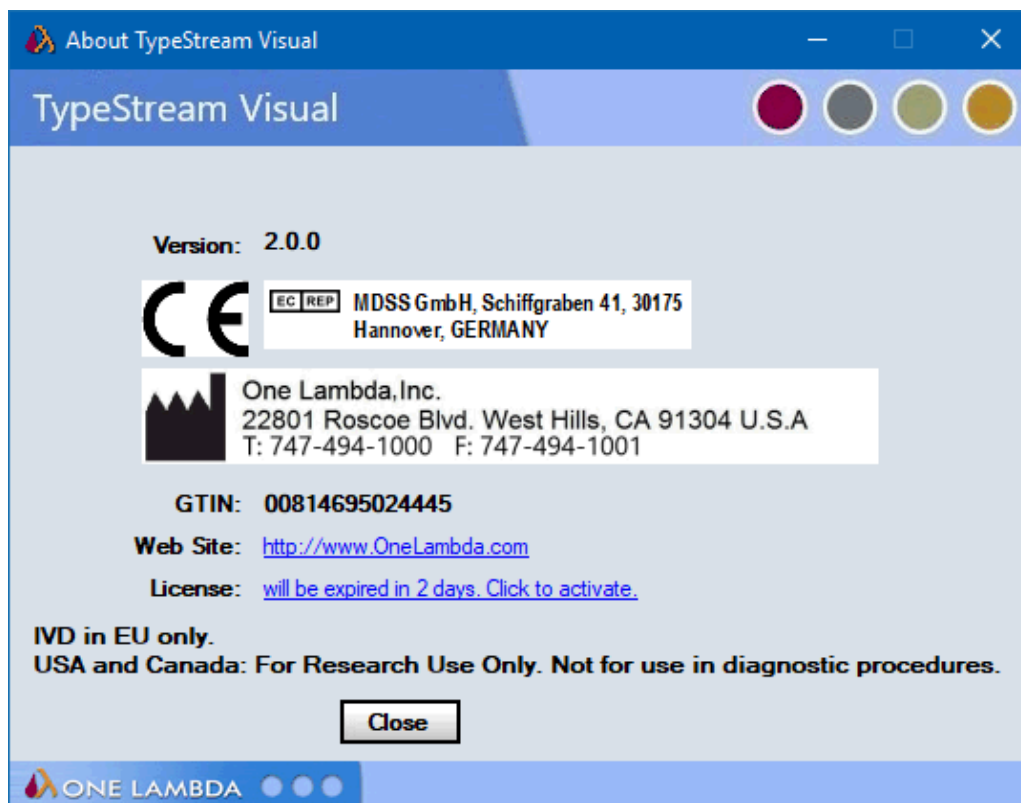
In the Security Login Screen, enter the User Name and Password you entered in the User Info Screen, Click Log In to open the program.

Verify installation of TypeStream Visual 2.0

1. Open TypeStream Visual application and navigate to About → About TypeStream Visual



2. The following window will display



3. If the **version** information is not as shown above, please contact One Lambda Technical Support for assistance.

Updating Prior Versions of TypeStream Visual Software to 2.0

If you have a previous version of TypeStream Visual and wish to update it to the latest version without disturbing the database contents, do the following:

1. Remove the prior version.

See the section below, **Uninstalling TypeStream Visual Software**. Backup your databases as necessary and then remove the application using the Control Panel.

2. Install the latest software.

See the section above entitled **Installing TypeStream Visual Software**. Obtain the latest software and launch the installer.

Note: For standalone configuration install, users migrating from one computer to another should make sure to move the /data/session folder to the new computer.

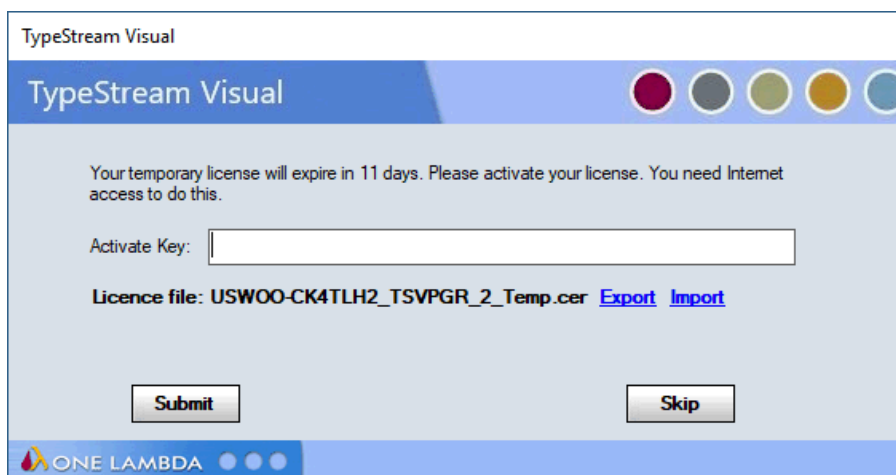
Licensing TypeStream Visual 2.0

TypeStream Visual requires a license key to run the application. A temporary license is provided for the first 11 days of usage, after which the software will cease to function unless a permanent license is obtained. After the permanent license is activated, the software will display a warning message at 30 days before expiration of this license. Your license information for TypeStream Visual is stored in a certificate file.

License Key Activation

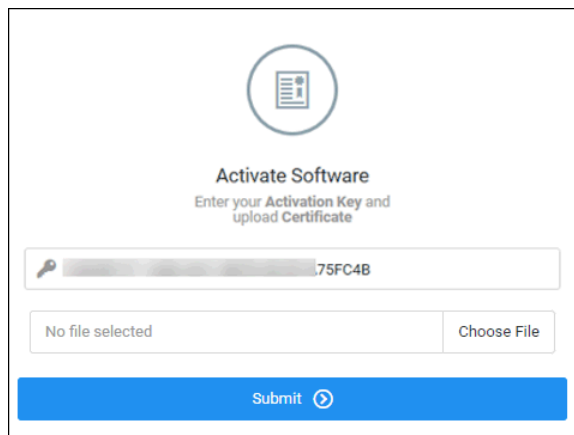
Please convert your temporary license into a permanent license as soon as possible to avoid interruption of software operation. To convert your temporary license into a permanent software license, please do the following:

1. After initial installation, when TypeStream Visual starts up, an 11-day license reminder screen will be displayed:

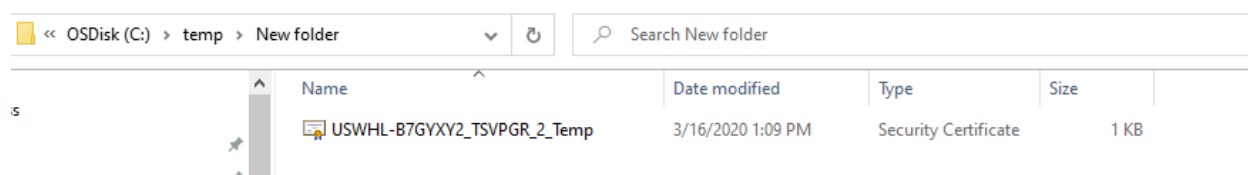


2. If you do not yet have a license key, you can click Skip to ignore the warning and continue to operate the software; however, please convert your license at the earliest opportunity to avoid interrupted software operation.
3. At the reminder screen, type in your Activation key and press **Submit**. Note your activation key can be found on your order confirmation.
4. Please follow Instructions in **Appendix B** in case you get "Access to the path C:\ProgramData\One Lambda\TSV folder is denied" when you click on Submit.
5. If the activation of your license fails by using the Activate Key facility, proceed with the rest of these steps.
6. **Export your certificate file to disk** using the **Export** link. The **Export for Folder** box will appear and allow you to save the certificate file on your computer. Press **OK** when ready to save the file.
7. A message will then appear confirming successful saving of the file (not shown).
8. On a computer with Internet access, navigate to the **OLI License Renewal website** and do the following:
 - a. In a web browser, go to <https://forms.onelambda.com/software/activation>

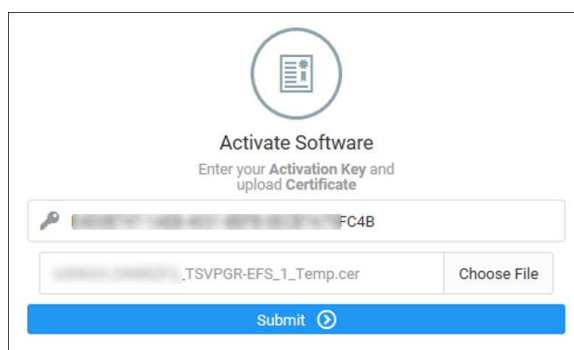
- b. Copy your certificate from Step 4 to a folder on this computer.
- c. Enter your activation key in the Activation Key box, then click the Choose File button.



- d. A Browse window opens. Click on the certificate file you previously saved. Click Open: (Your certificate file name and location will vary from examples shown here.)

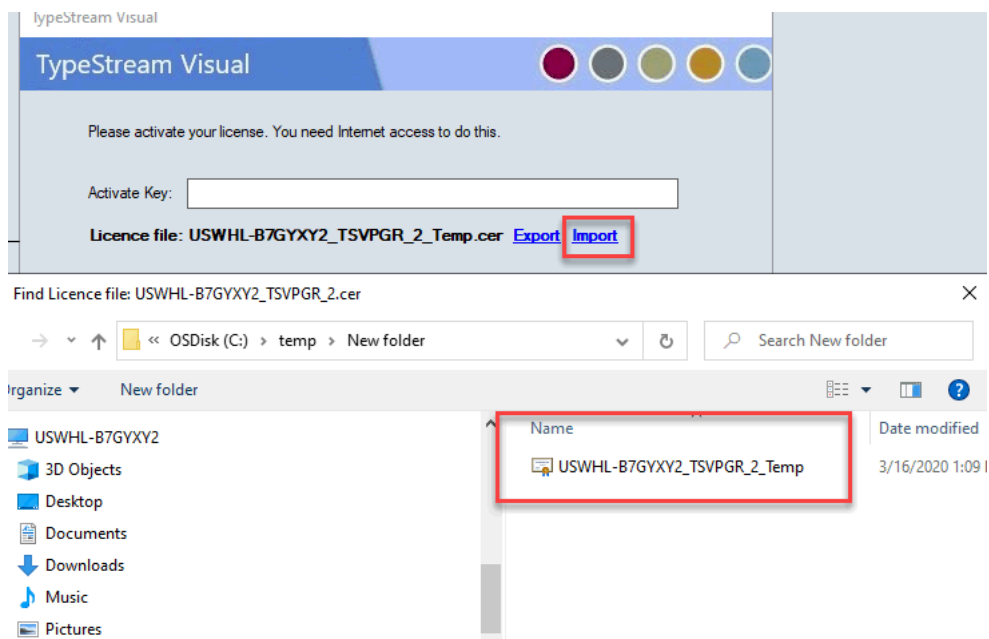


- e. The certificate file will be displayed in grey on the web form shown below. Click the blue Submit button:

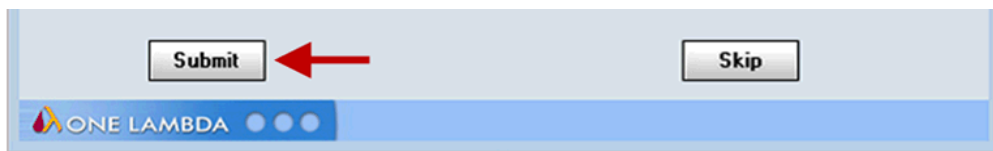


- f. If the operation was successful, your order information will be updated for TypeStream Visual and your temporary license will be converted into a permanent license.
 - g. Click on the Download button to download your certificate with your permanent license.
 - h. Copy your certificate file with your permanent license back to that the computer you are attempting to activate TypeStream Visual.
9. Startup TypeStream Visual. If the program runs successfully, you are finished with the licensing procedure. Skip Step 9.

10. Use the **Import** link on the reminder screen to install the certificate with permanent license that you obtained from the website. A selection box will appear and allow you to choose the certificate file to import into TypeStream Visual:




Once the new certificate file has been selected, it will be displayed in the **License file** field. At this point, click Submit:

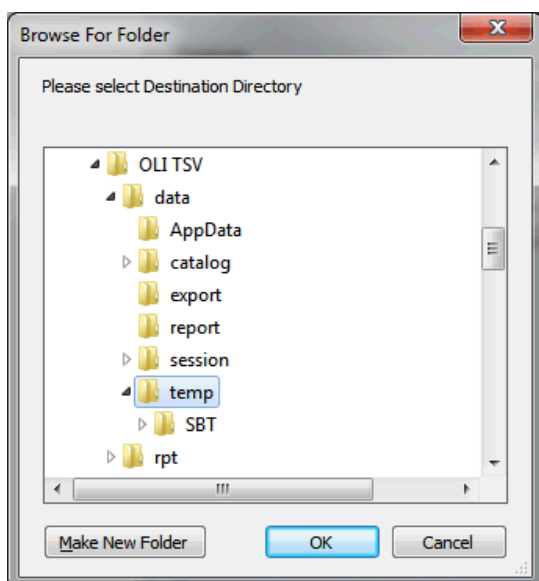


Uninstalling TypeStream Visual Software 2.0

Please note that the contents of your existing TypeStream Visual database will not be impacted by removal of the TypeStream Visual application. You can continue to use your existing database with any new version of TypeStream Visual that you install.

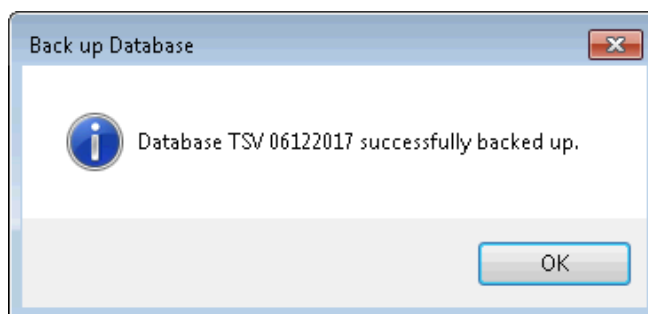
(Optional) Backup your TypeStream Visual Database

- Within the Database Utility window, click the Database Tasks > Backup Database option.
- From the Database Name drop-down list, select a database.
- Click the Browse Button  next to the Destination field. This brings up a new window where you can select a destination folder for the database backup.



Note: The location you select for the database backup must be somewhere on your local hard drive. You cannot store it on your desktop, in your My Documents directory, or on a network directory.

4. Indicate a database Backup File Name in the Backup File field. The backed up files are stored with a backup (.bak) file extension.
5. Click the Backup button. After backup, the following message is displayed.

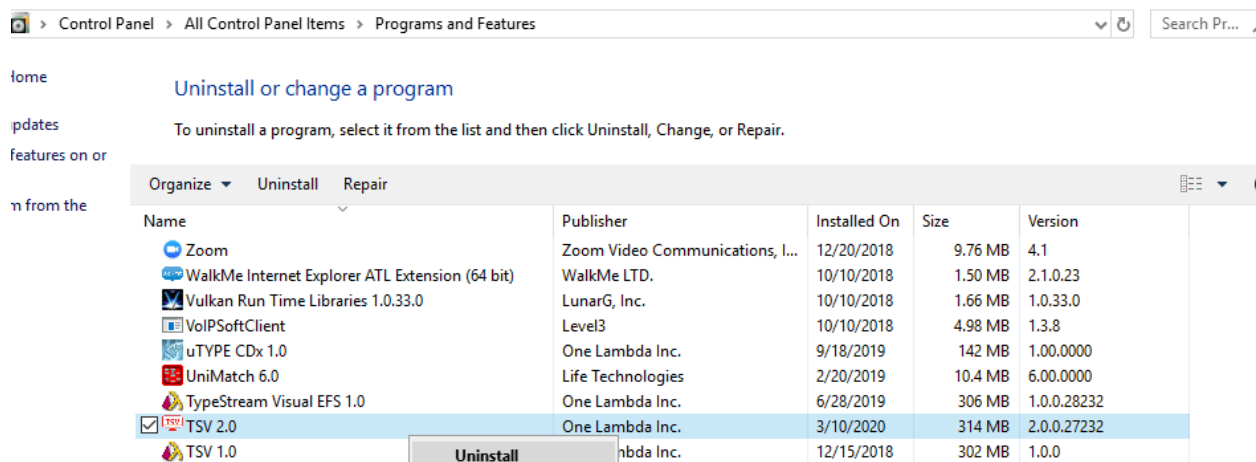


6. Click the OK button. The database is saved as a backup file in the location you specified.

Uninstalling the TypeStream Visual Program

From the Control Panel, Programs and Features section, select TSV 2.0. Right click and select Uninstall.

Note: If the Remove Button is not displayed, contact your system administrator - you may not have the necessary privilege level to uninstall software programs.



After uninstalling the program, verify that the program folder has been removed from C:\Program Files (x86)\One Lambda\TSV 2.0

If not, delete the appropriate sub-folder from the TSV folder.

Appendix A

Checklist for Installation Configuration

Note: If you've read this appendix and find you still need installation assistance, please contact One Lambda technical support. (1lambda-techsupport@thermofisher.com).

The sections in this appendix list the key steps you should follow when installing TypeStream Visual in the described configurations. They are based on the processes for the installation type you choose and reflect certain steps that are important to follow for each one.

Server/Standalone Configurations

Follow the installation process for a Server if your computer is storing the TypeStream Visual Database and Database Utility and the other computers on the network, (the clients) will be accessing your computer to use the TypeStream Visual software application. If your computer is the only computer storing and accessing the TypeStream Visual application and the TypeStream Visual Database and Database Utility are also installed on your computer, follow the installation process for a Standalone configuration.

Server/Standalone Installation Checklist

Follow the installation process for a Server if your computer is storing the TypeStream Visual Database and Database Utility

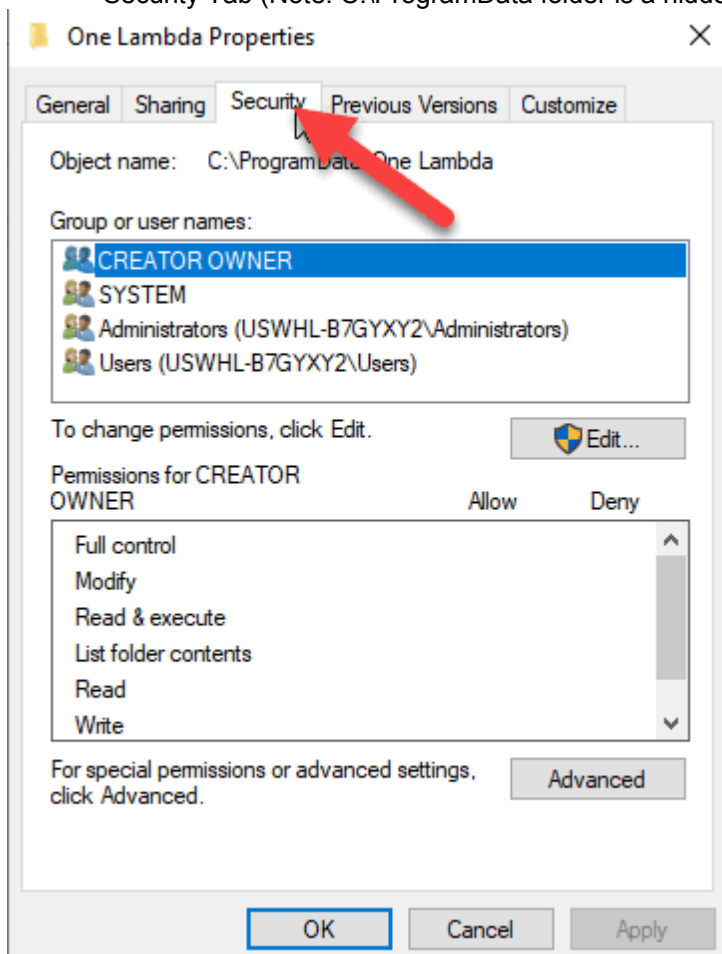
- ✓ If you are accessing a central SQL Server, make sure it is set up to receive remote connections.
- ✓ Make certain to install SQL Server and the .NET Framework, if prompted to do so.
- ✓ Follow all the prompts for installing TypeStream Visual, including accepting the license agreement, until the installation is complete.
- ✓ Open the TypeStream Visual Database Utility (TSV DB Utility), making sure to select the Server/Standalone Install for *Install Type*.
- ✓ Connect to a *local SQL Server*, or a *SQL server on the network* to which you have access.
- ✓ Connect to an existing database on the SQL server you selected in the previous step or create a new database on that SQL server.
- ✓ Set up your user and lab profiles.

Appendix B

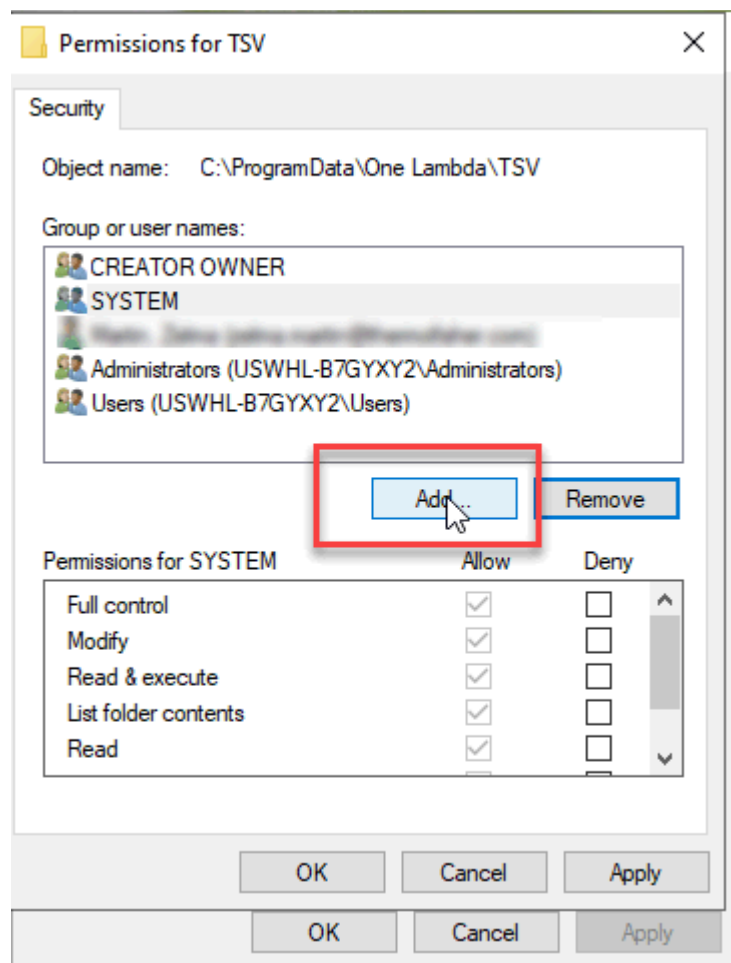
Folder Permission

In case users see an error message where the Access to the path C:\ProgramData\One Lambda\TSV folder is denied, please have your system administrator do the following –

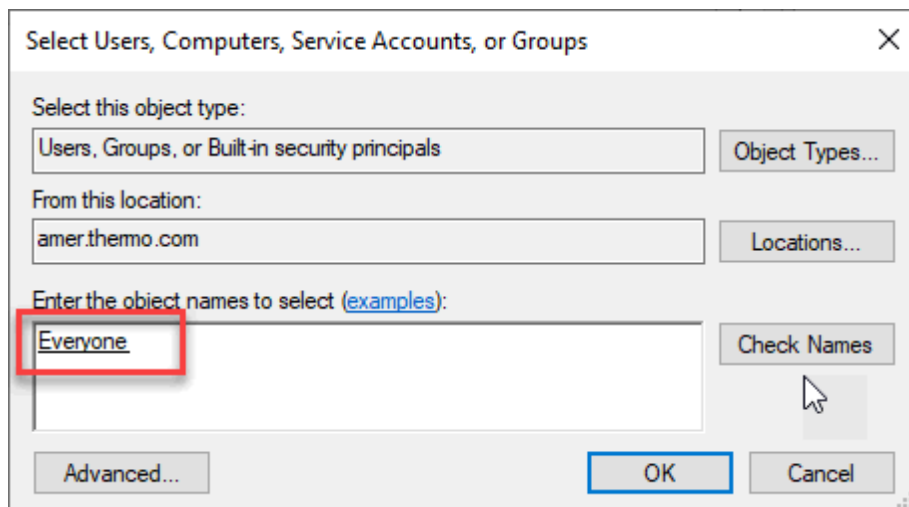
- 1) Right click on C:\ProgramData\One Lambda\TSV folder-> Click on Properties ->Click on the Security Tab (Note: C:\ProgramData folder is a hidden folder)



- 2) Click on Edit and Add Everyone to the folder permission



3) Key in Everyone in the Window as below and click OK.



4) Provide Full Control to Everyone by checking on the checkbox and Click OK.

